



Vault™
Under-mount Apron Front Kitchen Sink
K-3945

Features

- 36-inch minimum base cabinet width.
- 18-gauge stainless steel.
- Under-mount.
- Large/medium bowls.
- Smart Divide® lowered divider.
- With integral shortened self-trimming apron.
- With SilentShield® sound-absorption technology.
- 35-1/2" (902 mm) x 21-1/4" (540 mm)

Optional Accessories

- K- 6434 Saddle Utility Rack
- K- 6477 Sink Rack
- K- 8801 Sink Strainer

Components

Product includes:

- 91915 Hardware Kit
- K- 6476 Sink Rack

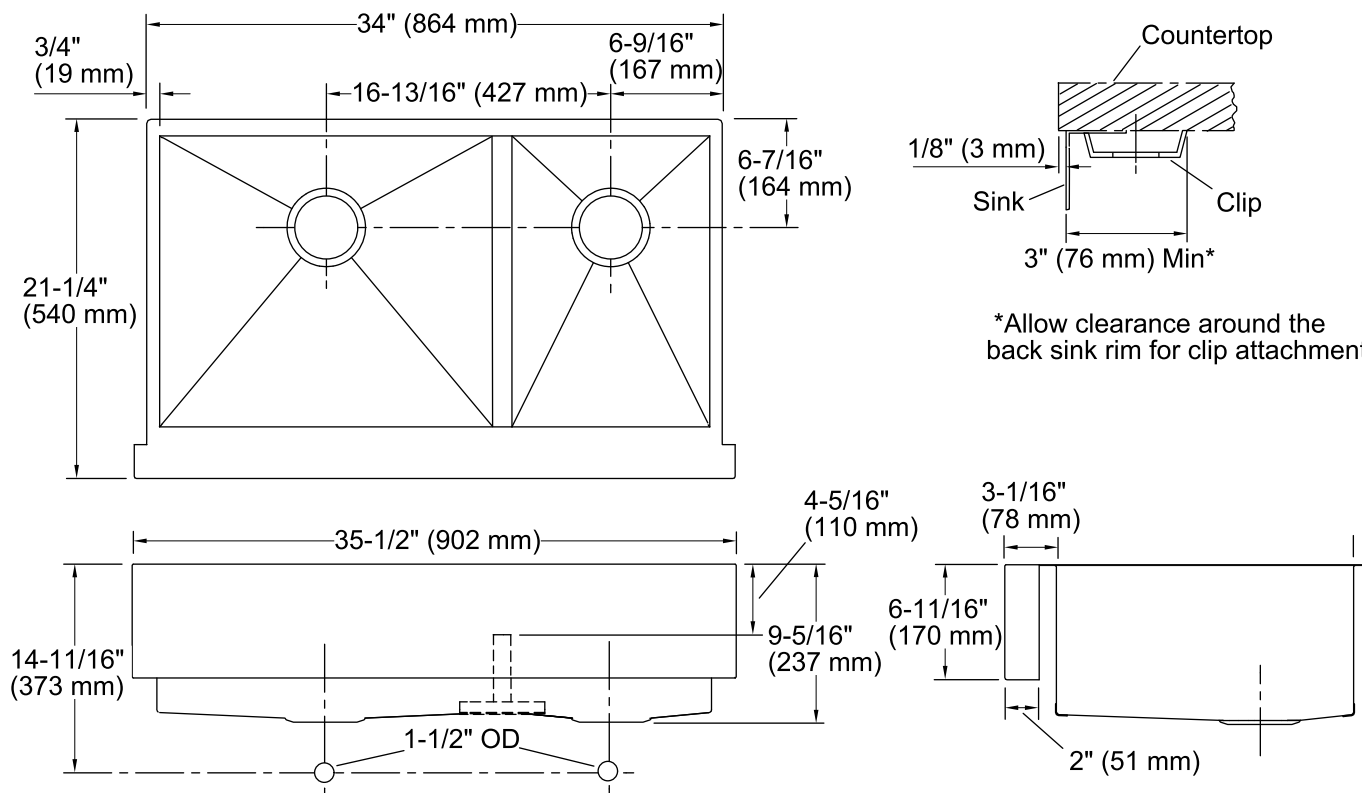


Codes/Standards

ASME A112.19.3/CSA B45.4

**Lifetime Limited Warranty for
KOHLER® Stainless Steel Sinks**

See website for detailed warranty information.



Technical Information

All product dimensions are nominal.

Bowl configuration: Offset

Installation: Under-mount

Min. base cabinet width: 36" (914 mm)

Bowl area (Left) Length: 19-11/16" (500 mm)

Width: 17-3/16" (437 mm)

Bowl depth: 9" (229 mm)

Bowl area (Right) Length: 11-11/16" (297 mm)

Width: 17-3/16" (437 mm)

Bowl depth: 9" (229 mm)

Drain hole: 3-11/16" (94 mm)

Template: Under-mount, 1166719-7, required, included

Notes

Install this product according to the installation guide.

Allow a minimum of 3" (76 mm) clearance for the back 1" (25 mm) sink rim flange for clip attachment.

The 3/4" (19 mm) side rim flanges are supported without using the clip attachment. See the installation guide for further instructions.